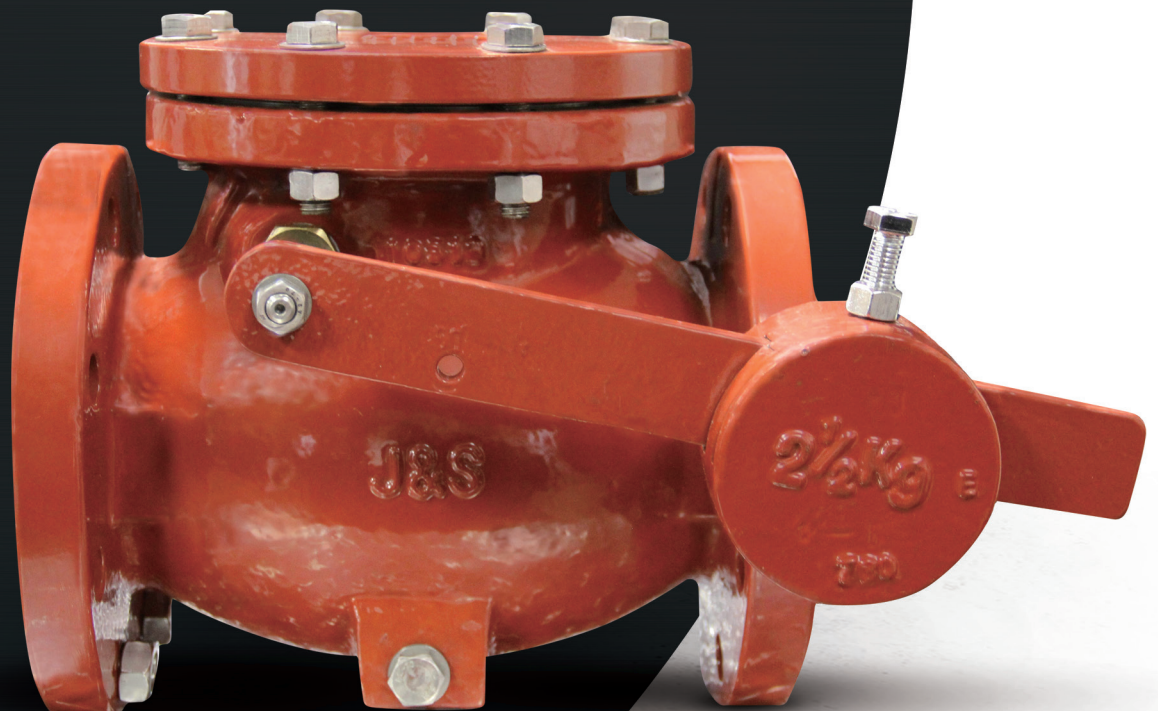
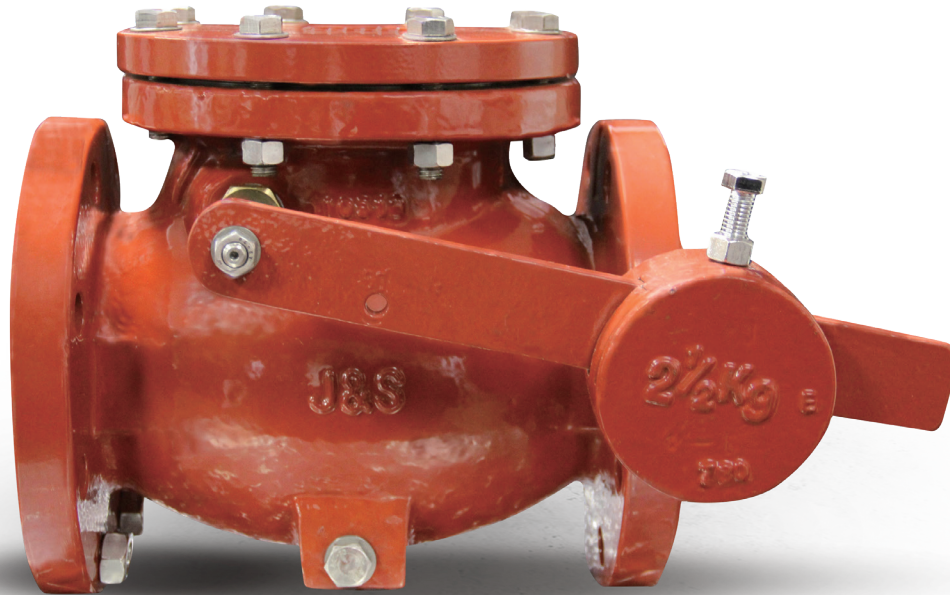


LEVER AND WEIGHT CHECK VALVES

**AWWA C508
SIZES 2" - 24"**



LEVER AND WEIGHT CHECK VALVE SERIES 9000 AWWA C508



DESIGN FEATURES

BODY: Ductile Iron

BODY SEAT: ASTM B62 Bronze

DISC: Ductile Iron

DISC SEAT: ASTM B62 Bronze or Rubber

COVER: Ductile Iron

PACKING: EPDM O-Ring

FLANGES: ANSI B16.1 Class 125 Flanged

SIZES: 2" - 24"

INSTALLATION: Vertical or Horizontal Installation

WORKING PRESSURE:

- 12" and Smaller - 200 PSI Working Pressure
- 14" and Larger - 150 PSI Working Pressure

TESTING PER AWWA C508

COATING PER AWWA C550: Epoxy Coating Inside/Out

AVAILABLE:

- Lever and Weight
- Lever and Spring

OPTIONS:

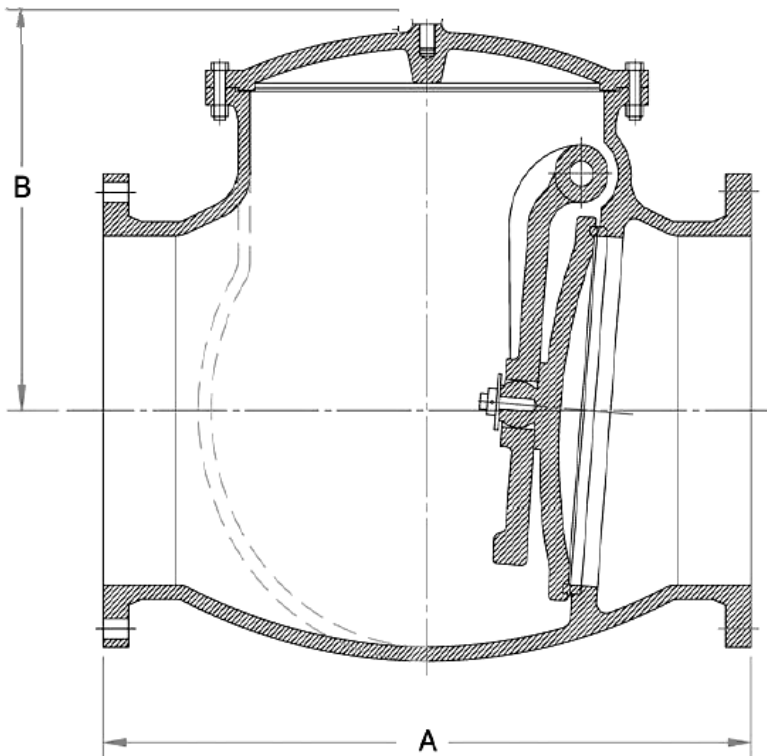
- Stainless Steel Hardware
- Honeywell Limit Switches

DIMENSIONS SERIES 9000 LEVER & WEIGHT:

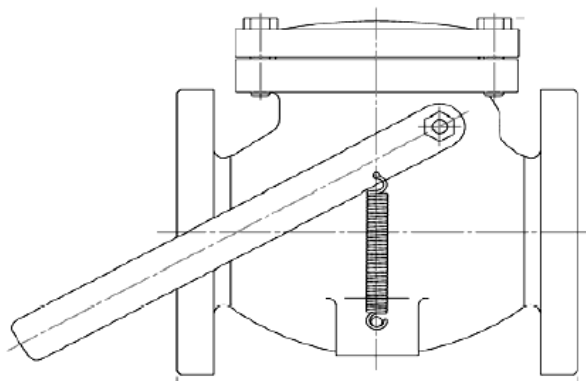
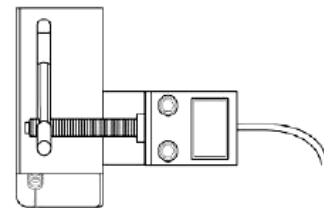
| SIZE | 2" | 2.5" | 3" | 4" | 6" | 8" | 10" | 12" | 14" | 16" | 18" | 20" | 24" |
|-----------------|--------|--------|--------|---------|--------|---------|---------|---------|---------|---------|---------|---------|---------|
| MODEL | 9002 | 9025 | 9003 | 9004 | 9006 | 9008 | 9010 | 9012 | 9014 | 9016 | 9018 | 9020 | 9024 |
| A FACE TO FACE | 8" | 8 1/2" | 9 3/8" | 11 3/8" | 14" | 19 3/8" | 24 3/8" | 27 1/2" | 30 7/8" | 35 5/8" | 35 5/8" | 40" | 47 5/8" |
| B CENTER TO TOP | 4 5/8" | 5 1/4" | 5 1/2" | 8 1/2" | 8 1/2" | 10 1/2" | 12" | 13 1/2" | 17 5/8" | 20 3/8" | 21 5/8" | 23 1/4" | 26 5/8" |

Design and Materials Subject to Change Without Notice. *Contact J&S Valve for Any Updated Drawing

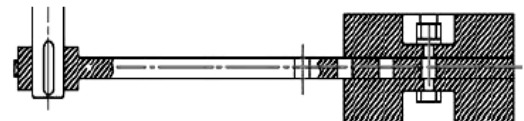
ANSI CLASS 125 FLANGES



LIMIT SWITCH



LEVER & SPRING



LEVER & WEIGHT

Design and Materials Subject to Change Without Notice. *Contact J&S Valve for Any Updated Drawing

CHECK VALVE SPECIFICATIONS

1. SCOPE

- 1.1** This specification covers the design, manufacture, and testing of 2 inch through 24 inch. Swing Check Valves suitable for cold working pressures 150 psi in water and wastewater service.
- 1.2** The check valve shall be of the full flow body type.
- 1.3** The check valve shall be capable of accepting lever and weight, or oil cushion or lever and spring.

2. STANDARDS, APPROVALS, AND VERIFICATION

- 2.1** The valves shall be designed, manufactured, and tested in accordance with American Water Works Association Standard ANSI/AWWA C508.

3. CONNECTIONS

- 3.1** The valves shall be provided with flanges in accordance with ANSI B16.1, Class 125 iron flanges or ANSI B16.42, Class 150 for ductile iron flanges.

4. DESIGN

- 4.1** The valve body shall be full flow equal to nominal pipe diameter at all points through the valve.
- 4.2** The top access port shall be full size, allowing removal of the disc without removing the valve from the line. The access cover shall be domed in shape to provide flushing action over the disc for operating in lines containing high solids content.
- 4.3** When specified, the valve shall be factory equipped with a lever and weight assembly. The lever shall be equipped with three holes for adjusting the bolted weight assembly. When the valve is closed, the lever and weight shall be located 30 degrees below horizontal.
- 4.4** When specified the valve shall be factory equipped with a lever.
- 4.5** When specified, the valve shall be factory equipped with a lever and spring assembly. The spring shall be mounted to a bracket on the side of the valve body with a bolt assembly to adjust the spring tension.

5. MATERIALS

- 5.1** The valve body, cover and disc shall be constructed of ASTM A536 Grade 65-45-12 ductile iron sizes 2 inch through 24 inch.
- 5.2** The exterior and interior of the valve shall be coated with an NSF/ANSI 61 approved fusion bonded epoxy coating.
- 5.3** The disc arm and external levers shall be ASTM A536 Grade 65-45-12 ductile iron.

6. OPTIONS

- 6.1** A pre-wired limit switch will be provided (when specified) to indicate open/closed position to a remote location. The mechanical type limit switch shall be activated by the external arm and rated for NEMA 4, 6, or 6P and shall have U.L. rated 5 amps, 125 or 250 VAC contacts.

7. MANUFACTURER

- 7.1** All valves shall be hydrostatically and seat tested per AWWA C508 to demonstrate zero leakage and structural integrity. When requested, the manufacturer shall provide test certificates, dimensional drawings, parts list drawings, and operation and maintenance manuals.
- 7.2** Swing Check Valves shall be J&S Series 9000 as manufactured by J&S Valve, Inc. Huffman, TX USA



2323 1st Street Huffman, Texas 77336

T: 281.324.3990 | F: 281.324.6879

E: Sales@jandsvalve.com